

WARNING

Incorrectly wiring Just Right Light® ballasts will destroy the ballast and may VOID the warranty!

Rapid Start vs. Instant Start Ballasts

Most T-12 ballasts manufactured are rapid start.

Most T-8 ballasts manufactured are instant start.

The Just Right Light® ballast is a T-8 rapid start ballast.

Rapid start and instant start ballasts are wired differently. If wired incorrectly, the Just Right Light ballast will be destroyed or burn out, as soon as the electricity is turned on. *Such damage may VOID the warranty.*

As illustrated in the drawing at the top right, lamp holders (sockets) in fixtures wired with instant start ballasts have only one wire, with a shunt in the holder providing current to both pins of the lamp.

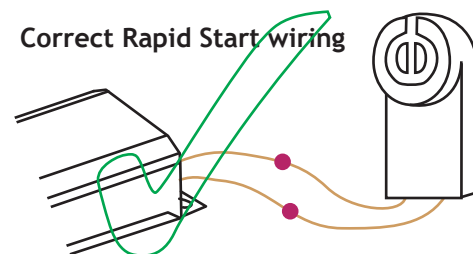
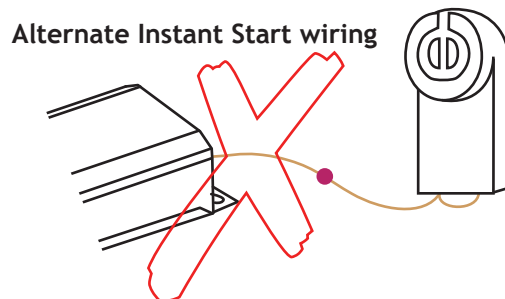
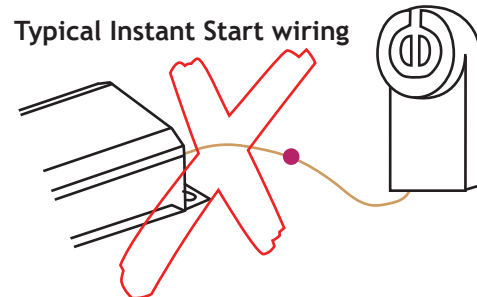
If you have the type of lamp holders (sockets) that have only one wire, they must be replaced with lamp holders (sockets) that have two wires.

Sometimes you will see a wire with a jumper as illustrated in the second drawing on right, so both pins are connected to a single ballast lead.

If you have this second type of lamp holder (socket), separate the wires, and use a continuity tester to make sure the two pins aren't shunted together. If the leads are independent, connect the wires to a pair of ballast leads. If they are shunted, replace the lamp holders (sockets). Do this before attempting to wire the ballast.

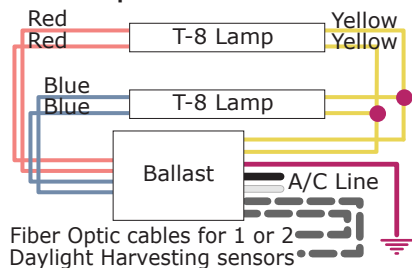
Normal rapid start ballasts have two leads connected independently to the two wires on the lamp holder (socket), as shown in the drawing at the right, bottom.

As indicated in the wiring diagrams below, both pins from both sides of each lamp get wired independently from the other pins for that lamp. The only "common" connection is for one side of all the lamps to be wired to the two common yellow wires, so that each individual lamp gets connected to both of the yellow wires.



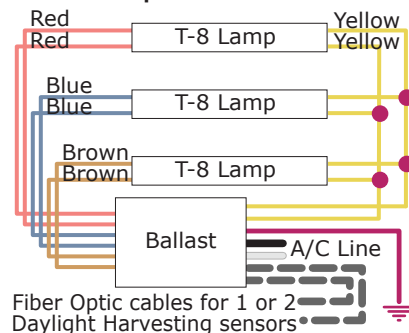
Wiring Diagrams

Two Lamp Ballast

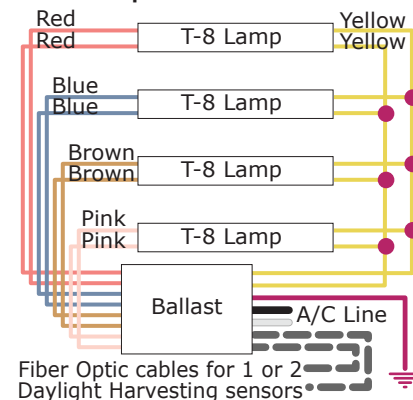


● = Wire Connector

Three Lamp Ballast



Four Lamp Ballast



NOTE: Lamps must be "Burned-In" for 100 hours before dimming. Disconnect A/C Current before installing or servicing. In addition to the safety issue, installing these ballasts on a live circuit can damage the internal electronics.